

# URBiNAT

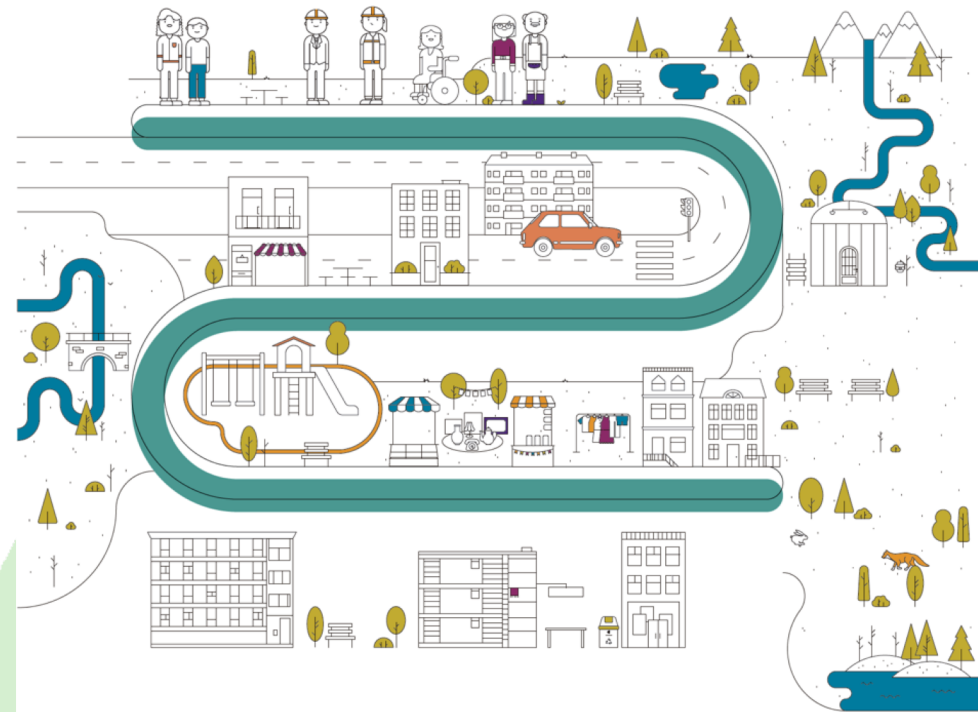
Gonalo Canto Moniz | CES  
[gmoniz@ces.uc.pt](mailto:gmoniz@ces.uc.pt)

Link - [PPT google](#)



# NBS in the Living Labs | Healthy Corridor

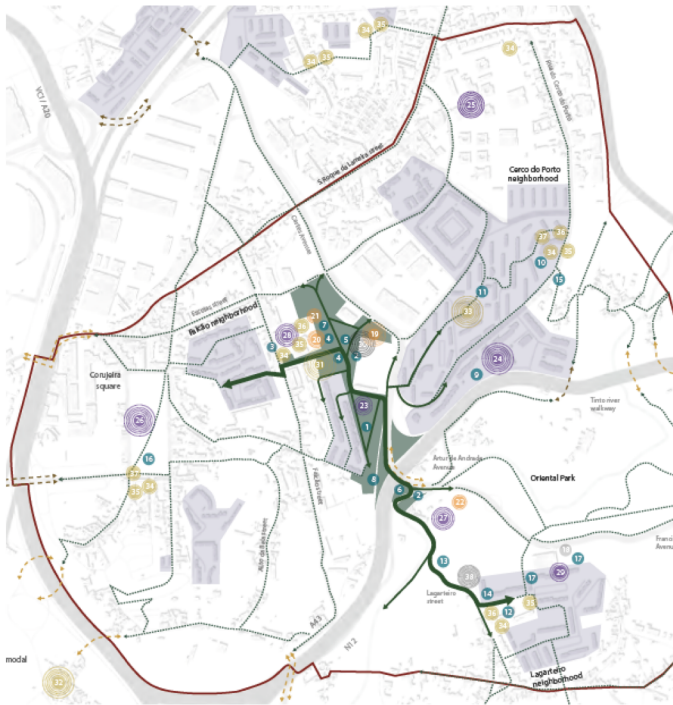
Healthy corridor is a public space, both material and immaterial, that connects and links neighbourhoods as a pathway and as a social, cultural and educational platform. It integrates not only nature-based solutions but also human-centred ones, providing a double effect on the environment and people's health and wellbeing.



# NBS in the Living Labs

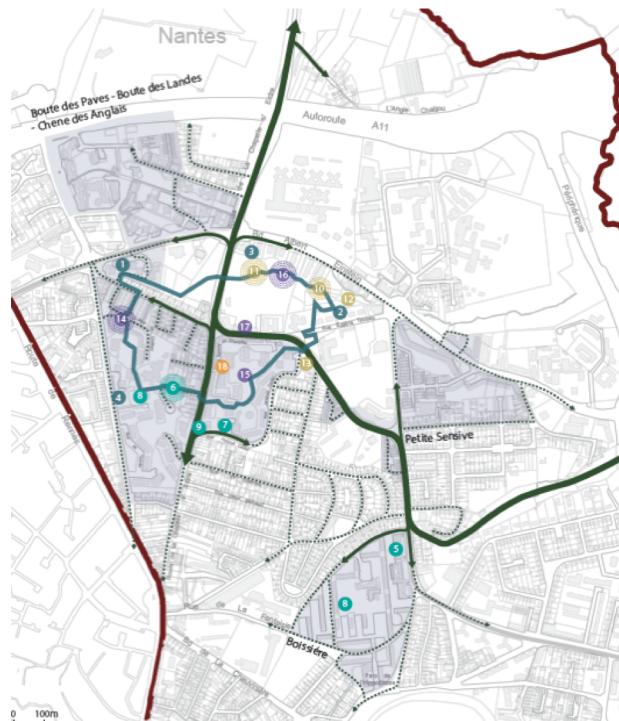
## PORTO

In-between neighbourhoods



## NANTES

Around neighbourhoods



## SOFIA

Across neighbourhoods



# NBS in the Living Labs

## Porto NBS

Public space and Nature (Ter)

Education and environment (Part + Ter + Tech)

Culture and Sport (Part + Ter)

Socio-economy and solidarity practices (SSE)

## Nantes NBS

Public space (Ter)

Education (Part + Ter + Tech)

Physical activity & Sport (Part + Ter)

Social and Solidarity Economy | Nature and food production

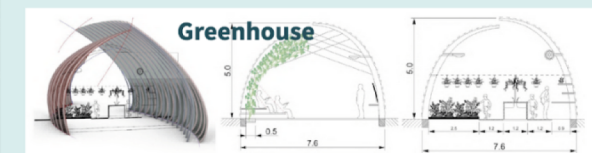
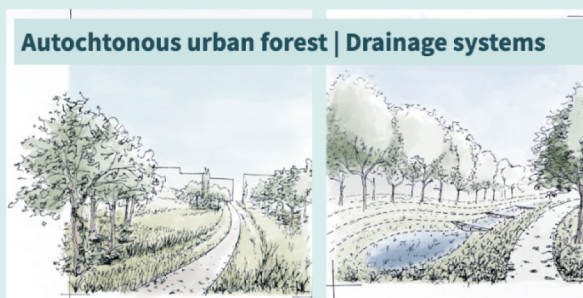
## Sofia NBS

Public space | Climate Adapt (Ter)

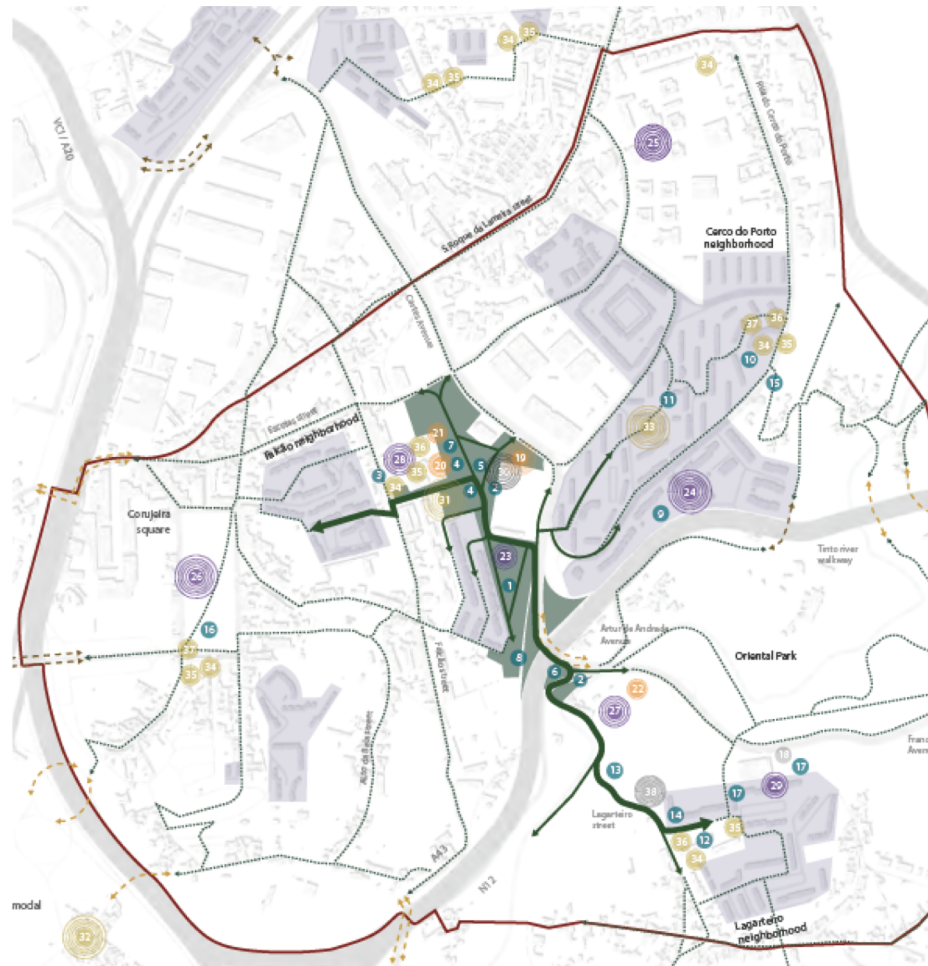
Education (Part + Ter + Tech)

Culture | Sport & Recreation (Part + Ter)

Social and Solidarity Economy (SSE)



# NBS in the Living Labs - PORTO



## CULTURE AND SPORTS

- 29. Lagarteiro sports hall renting model improvement
- 28. Initiative – Culture is Health
- 27. Local heritage route
- 26. Initiative – Memories of Campanhã
- 25. Artistic projects – O Lugar do Olhar
- 24. Cultural platform – Campanh'UP
- 23. Outdoor programme for sports and leisure initiatives
- 01. Outdoor space for sports and leisure activities
- 04. Nature-based amphitheatre
- 30. Artistic hangar

## SOCIAL ECONOMY AND SOLIDARITY PRACTICES

- 20. Community mobile kitchen
- 19. Campmarket
- 07. Oliveira urban garden expansion
- 21. Community-based management urban
- 32. Eco-construction and urban farming activities
- 33. Collective cleaning actions in public spaces
- 38. Environmental Education Centre

## PUBLIC SPACE AND NATURE

- 02. Improvement of connective path between neighbourhoods and facilities
- 03. Meeting spot next to Falcão Primary School with sensory
- 05. Existing ruin recovery
- 06. Pedestrian connection to the Oriental City Park improvement
- 09. Cerco do Porto Primary School surroundings improvement
- 10. Ring area recovery (Cerco do Porto)
- 11. Lagarteiro Primary School surroundings safety increase
- 12. Viewpoint reformulation next to Campanhã Cemetery
- 13. Lagarteiro neighbourhood access path requalification
- 14. Lagarteiro Street section requalification
- 15. Access to Pego Negro and Oriental City Park improvement
- 16. Playground in Corujeira Square
- 17. Lagarteiro sports hall access improvement (informal paths)
- 18. Lagarteiro sports hall access improvement (entrance door)
- 31. Educational Living Lab
- 34. Pedagogical farming related initiatives in local schools
- 35. Educational play equipment in the schools playgrounds
- 36. Local primary schools playground improvement
- 37. Local primary schools access area improvement

## EDUCATION AND ENVIRONMENT



# Experiences with (up)scaling of NBS

## Community gardens

- From private associations to municipal urban gardens

## Solidarity Markets

- Campmarket as an informal market with vegetables, crafts, food, games, music, sports (rugby, yoga). Every month, last saturday

## Pedagogical gardens

- Scale the same proposal in 6 primary schools to replicate the same prototype

## Water management (BIOPOLIS)

- Develop the same design solution in different projects to expand the water management network

## Heritage route and yoga

- Every month, different routes, different social groups



# Experiences with (up)scaling of NBS

## Community gardens

- From private associations to municipal urban gardens

## Solidarity Markets

- Campmarket as an informal market with vegetables, crafts, food, games, music, sports (rugby, yoga). Every month, last Saturday

## Pedagogical gardens

- Scale the same proposal in 6 primary schools to replicate the same prototype

## Water management (BIOPOLIS)

- Develop the same design solution in different projects to expand the water management network

## Heritage route and yoga

- Every month, different routes, different social groups



# Experiences with (up)scaling of NBS

## Community gardens

- From private associations to municipal urban gardens

## Solidarity Markets

- Campmarket as an informal market with vegetables, crafts, food, games, music, sports (rugby, yoga). Every month, last Saturday

## Pedagogical gardens

- Scale the same proposal in 6 primary schools to replicate the same prototype

## Water management (BIOPOLIS)

- Develop the same design solution in different projects to expand the water management network

## Heritage route and yoga

- Every month, different routes, different social groups





# Experiences with (up)scaling of NBS

## Community gardens

- From private associations to municipal urban gardens

## Solidarity Markets

- Campmarket as an informal market with vegetables, crafts, food, games, music, sports (rugby, yoga). Every month, last saturday

## Pedagogical gardens

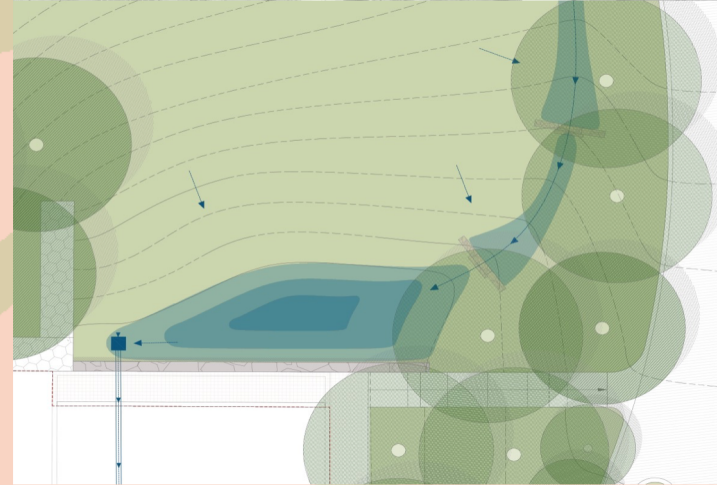
- Scale the same proposal in 6 primary schools to replicate the same prototype

## Water management (BIOPOLIS)

- Develop the same design solution in different projects to expand the water management network

## Heritage route and yoga

- Every month, different routes, different social groups



# Experiences with (up)scaling of NBS

## Community gardens

- From private associations to municipal urban gardens

## Solidarity Markets

- Campmarket as an informal market with vegetables, crafts, food, games, music, sports (rugby, yoga). Every month, last Saturday

## Pedagogical gardens

- Scale the same proposal in 6 primary schools to replicate the same prototype

## Water management (BIOPOLIS)

- Develop the same design solution in different projects to expand the water management network

## Heritage route and yoga

- Every month, different routes, different social groups



# Experiences with (up)scaling of NBS

## **Community gardens**

- From private associations to municipal urban gardens

## **Solidarity Markets**

- Campmarket as an informal market with vegetables, crafts, food, games, music, sports (rugby, yoga). Every month, last saturday

## **Pedagogical gardens**

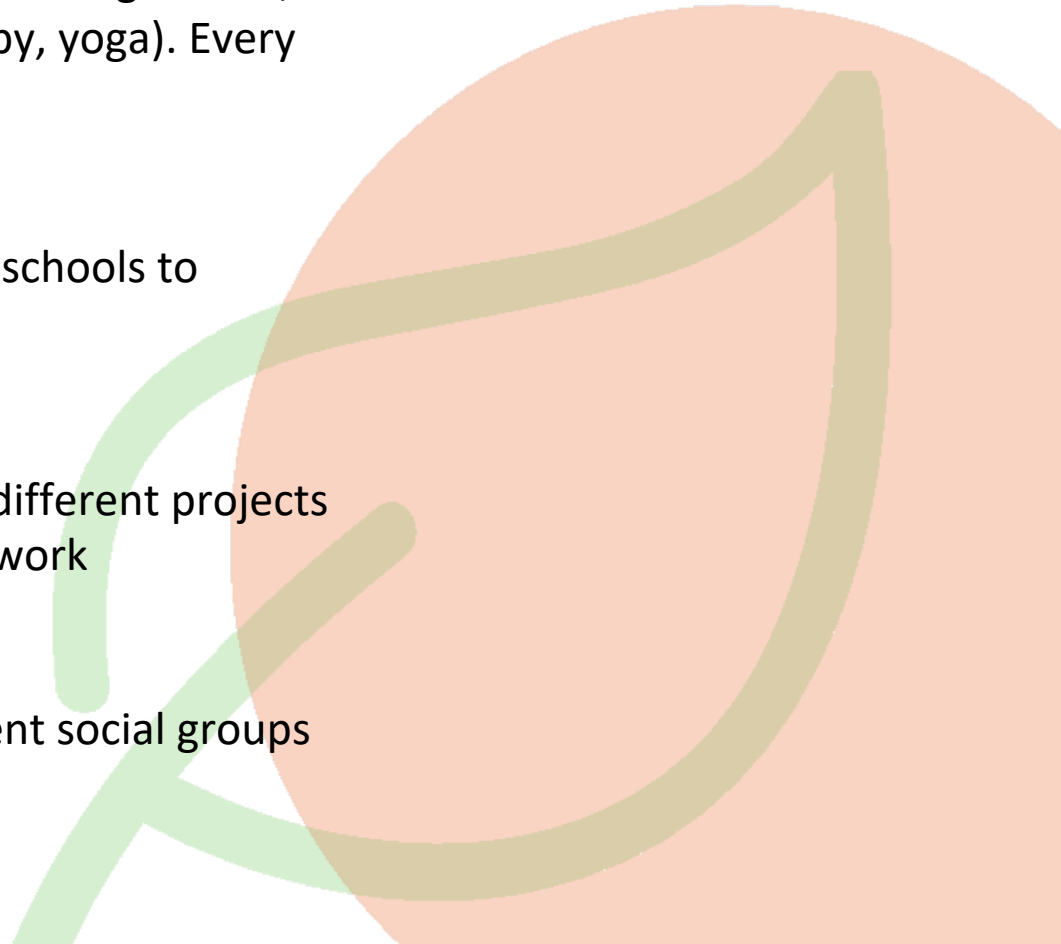
- Scale the same proposal in 6 primary schools to replicate the same prototype

## **Water management (BIOPOLIS)**

- Develop the same design solution in different projects to expand the water management network

## **Heritage route and yoga**

- Every month, different routes, different social groups



# Challenges

- Adapt to different physical context of the city
- Create diversity and relevance for each edition (campmarket, heritage route)
- Continuous engagement of the community and stakeholders
- Financial sustainability of the NBS services as Campmarket
- Municipalisation of the activities
- Engage local community versus stakeholder
- Integration of lessons learnt with other experiences
- Evaluation in order to progress
- Long-term sustainability based on public policies
- Investment from private initiatives

# Relevance of (up)scaling in context of the project

- To experiment and revise the methodology
- To prepare guidelines for future replication
- Learn from each city / promotor (each case is unique)
- Transfer (adaptation, adequacy and integration) of knowledge
- Improves networking between cities
- Role and effect of different local/regional governance contexts where NBS are implemented - tools and guidelines for a sustainable implementation of NBS in the URBiNAT cities

# Lessons Learned / Conclusion

- Learning from other experiences to know mistakes
- Urban gardens have a strong interest for the community
- Engage people with experience
- Important to dialogue with municipal technicians that are responsible by the area (education, environment, markets)
- Adapt the methodology and functioning according with the local experience (no copy-paste)