

TOWARDS AN EDIBLE CARTHAGE THE NEED FOR A NEW MODEL OF GOVERNANCE

Boubaker HOUMAN & Hayet BAYOUDH

2nd Edible Cities Network Conference 15–17 March 2023, Barcelona / **Advancing the edible city: ideas, practices and systems**

ISSAM BEN CHAABEN

EdiCitNet Awards 2021 / Local Heros



This project has received funding from the European Union's Horizon 2020 research and innovation programme under grant agreement No. 776665

CARTHAGE: SMALL COASTAL CITY / N-E TUNIS WITH A RICH AND MULTI-LAYERED HISTORY



Localization:	NE Tunisia
Total Surface :	640 ha
Archeological zone	407 ha
World Heritage Site	1979
National Park:	1985
Population:	19200

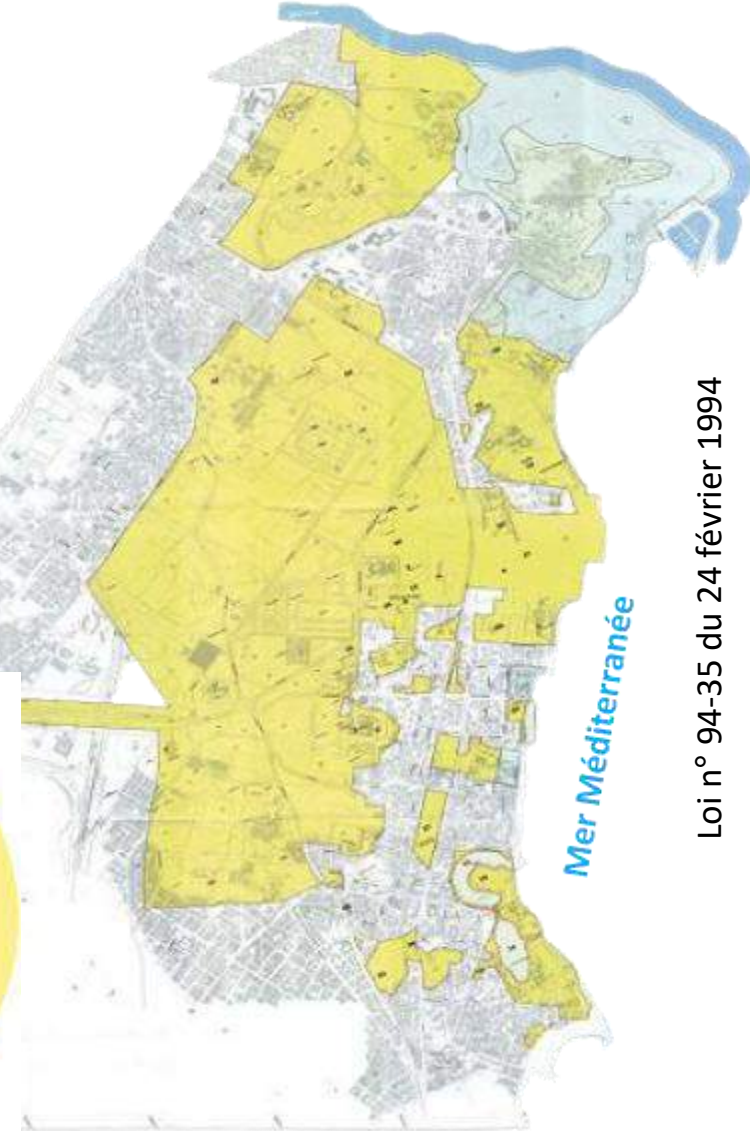
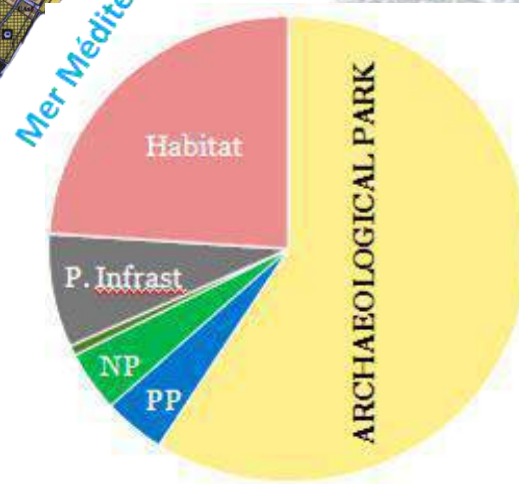
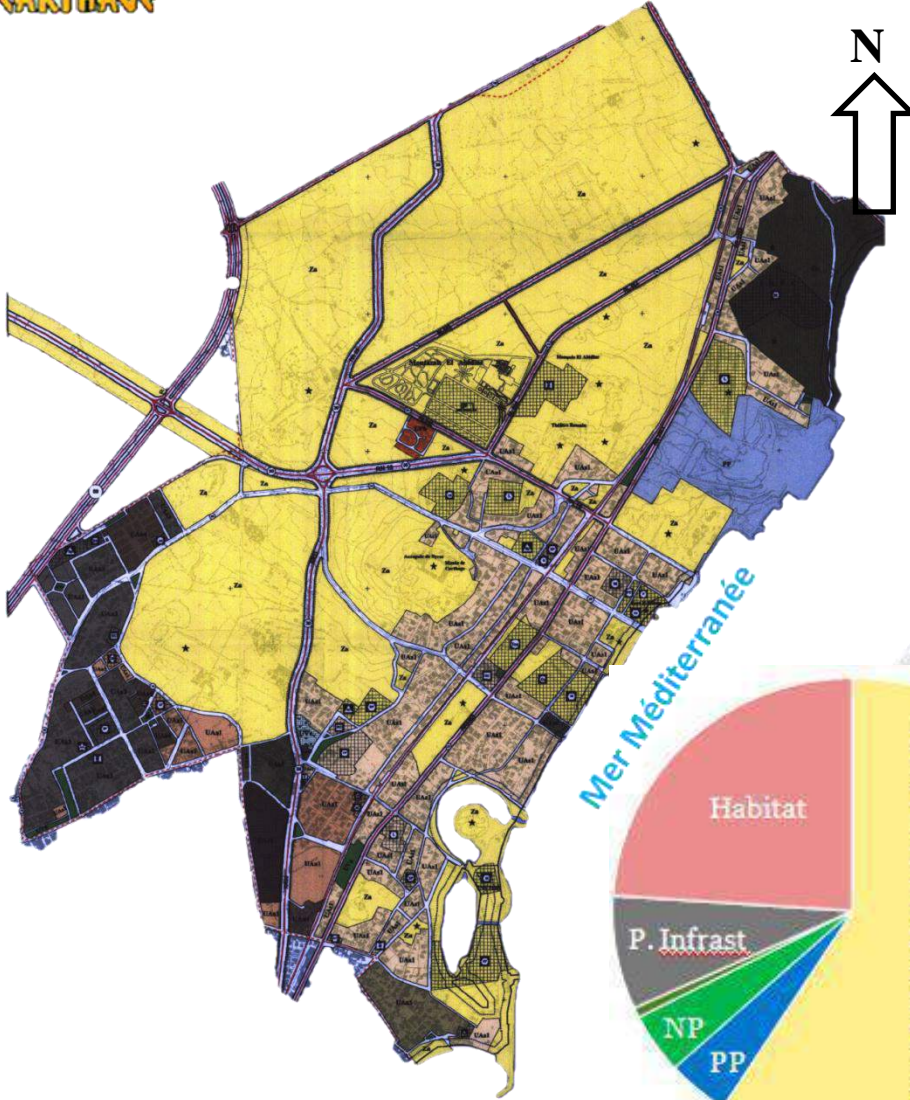


URBAN SETTING

Urban Management Map, 2006

« Yellow Map », 2022

Loi n° 94-122 du 28 novembre 1994



Loi n° 94-35 du 24 février 1994



SOCIO-ECONOMIC DISPARITIES

Eastern Carthage is a more well off and less densely populated part.
Western Carthage is densely populated and has higher levels of disadvantaged citizens.



CARTHAGE

WORLD HERITAGE CITY - SITE UNDER PRESSURE



IPCC / MEDITERRANEAN REGION
HOT SPOT OF CC

CONVENTION / PROTECTION WCNH
WORLD HERITAGE COMMITTEE

ENVIRONMENTAL CHALLENGES

CULTURAL POLICY CHALLENGES

ECONOMIC CHALLENGES

SOCIAL CHALLENGES

PARTICIPATORY INTEGRATIVE PLANNING APPROACHES

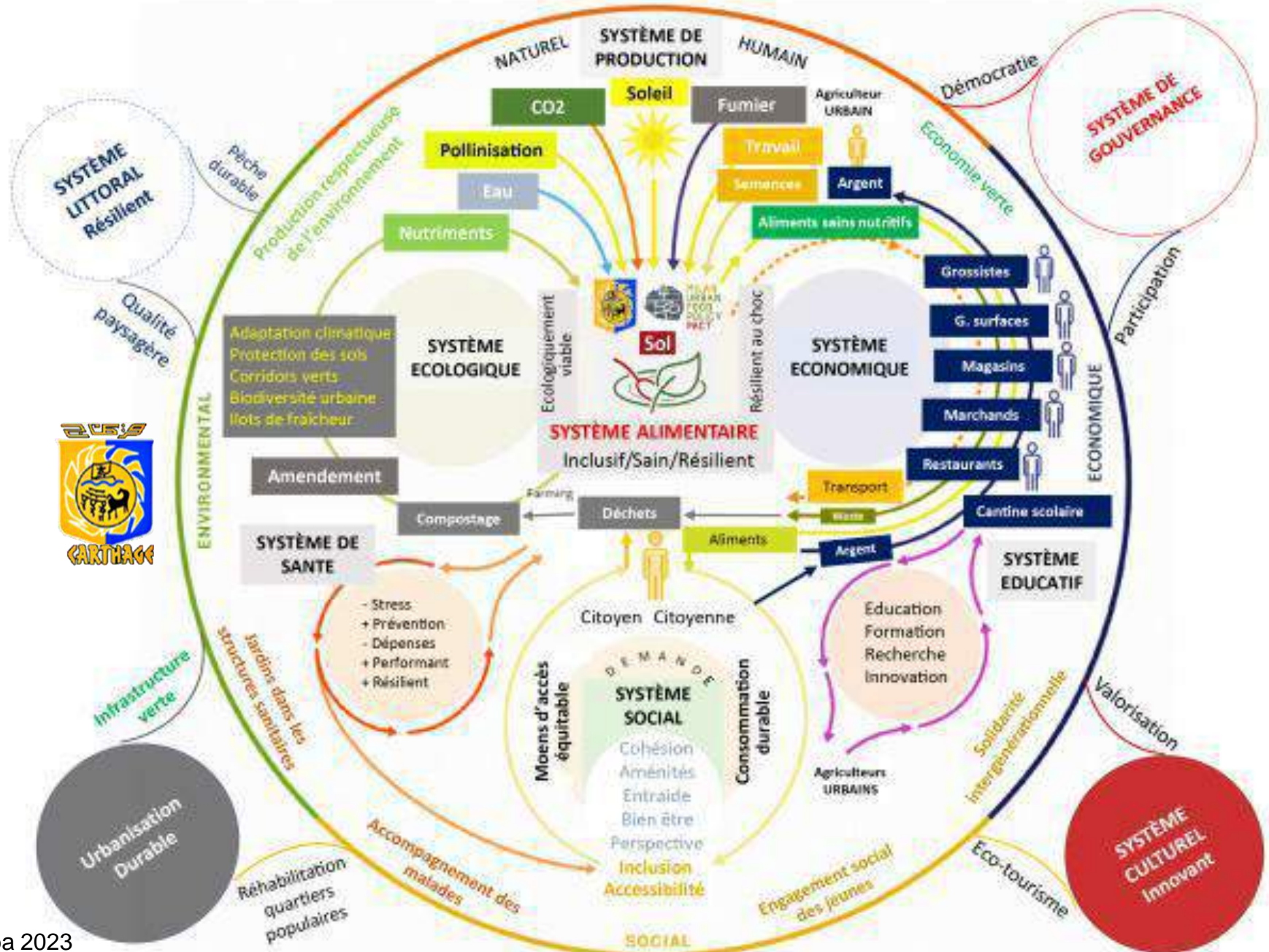


Transition Pathway



This project has received funding from the European Union's Horizon 2020 research and innovation programme under grant agreement No. 776665

FOOD SYSTEM





SOCIETAL CHALLENGES

Advocacy Note, 2023

Food autonomy



>>> *increase food autonomy within Grand Tunis and beyond*



<<< meeting Sustainable Development Goal: <<<
1 No poverty & 2 Zero hunger &
12 Responsible consumption and production



Behaviour change



>>> *support education and behaviour change*



<<< meeting Sustainable Development Goal: <<<
4 Quality education & 2 Zero hunger



Sustainable fisheries



>>> *improve fisheries, also with regard to fishing in protected archaeological sites*



<<< meeting Sustainable Development Goal: <<<
14 Life below water & 2 Zero hunger



Biodiversity



>>> *strengthen local biodiversity*



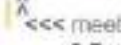
<<< meeting Sustainable Development Goal: <<<
15 Life on land



Economies & employment



>>> *stimulate the economy and address youth unemployment*



<<< meeting Sustainable Development Goal: <<<
8 Decent work & economic growth



Social cohesion



>>> *improve social cohesion*



<<< meeting Sustainable Development Goal: <<<
10 Reduced inequalities



Archaeological sites



>>> *address inertia of archaeological sites and their inhibition of development dynamics*



<<< meeting Sustainable Development Goal: <<<
11 Sustainable cities and communities



Protected coastline



>>> *address coastline degradation*



<<< meeting Sustainable Development Goal: <<<
14 Life below water



Responsible institutions



>>> *better network responsible public institutions and actors of change*



<<< meeting Sustainable Development Goal: <<<
16 Peace, justice and strong institutions &
11 Sustainable cities and communities



Circular systems



>>> *improve water availability & access and waste management*



<<< meeting Sustainable Development Goal: <<<
6 Clean water and sanitation &
12 Responsible consumption and production &
11 Sustainable cities and communities



EXAMPLES OF RELEVANT EXISTING « ECS »





'S PRIVATE OPEN SPACES

PRIVATE OPEN SPACES

Residential open spaces

Private gardens

Collectively-used open spaces

Gardens within buildings

Community gardens

Commercial open spaces

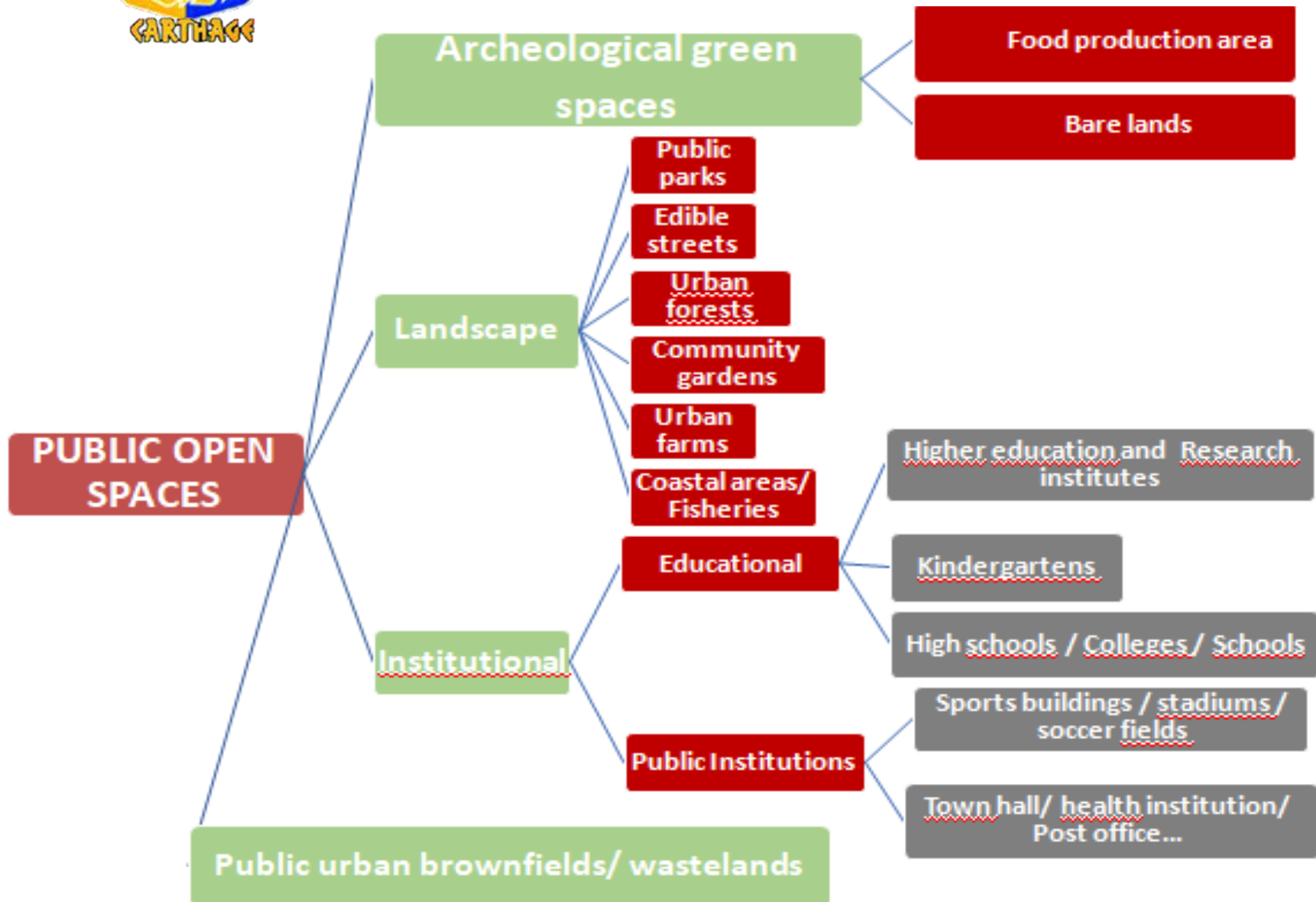
Urban micro-farms

Archaeological open spaces

Open" grazing lands



'S PUBLIC OPEN SPACES





POTENTIAL OPEN SPACES

**Archeological
Open Space**

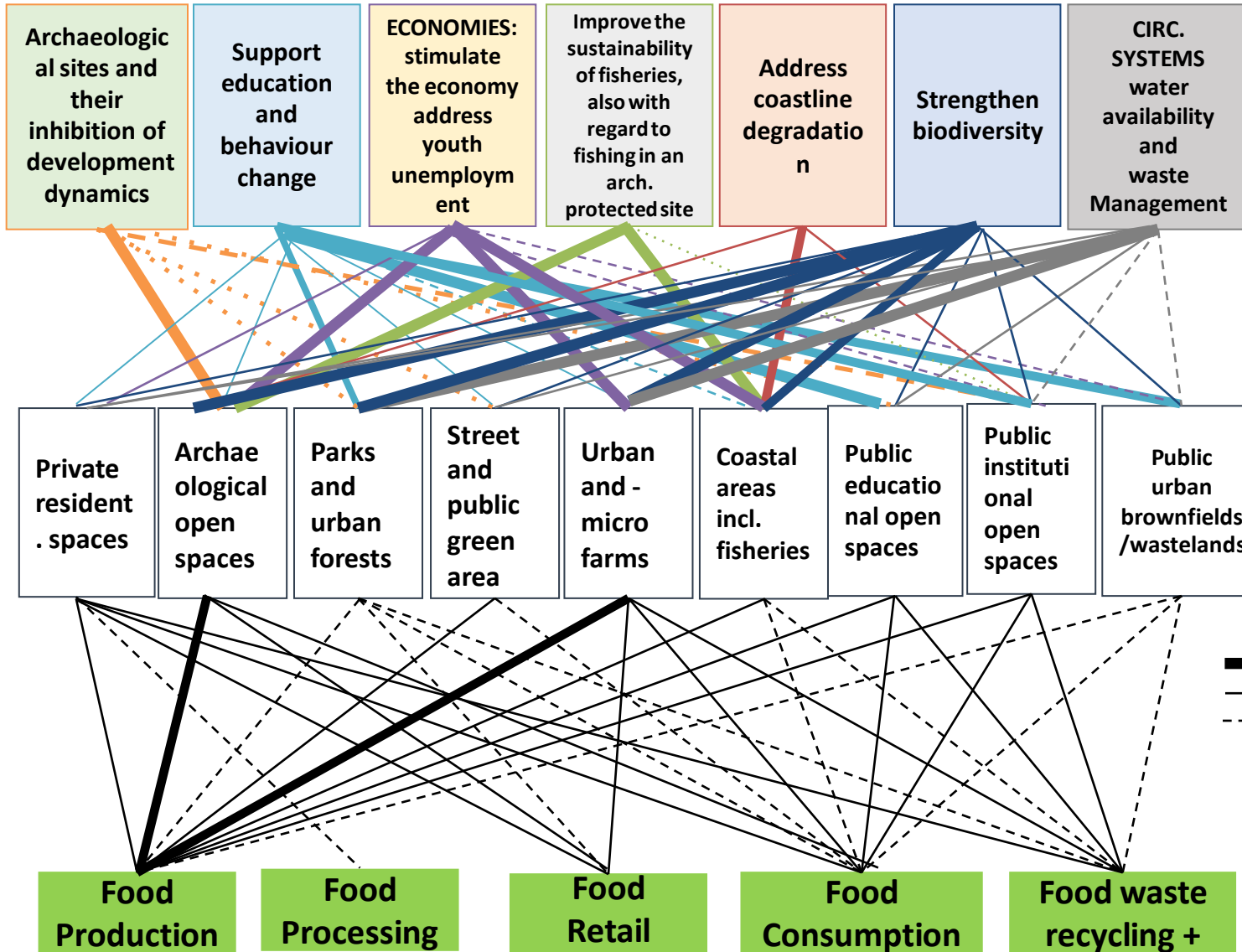


**Public
Open Space**





'S SOCIETAL CHALLENGE VS / OPEN SPACES



FOOD MAP



CLASSIFICATION DES ESPACES OUVERTS (open space classification)

- Espaces ouverts publics de la qualité paysage (public open space of landscape quality)
- Espaces ouverts publics éducatifs et institutionnels (public educational and institutional open spaces)
- Espaces ouverts archéologiques (publics et privés) (archaeological open spaces (public and private))
- L'agriculture urbaine dans les zones archéologiques (urban agriculture in archaeological areas)
- Espaces ouverts privés (private open spaces)
- Espaces ouverts privés commerciaux (private commercial open spaces)
- Zones côtières (coastal areas)
- Routes importantes et ligne ferroviaire (TGM) (important roads and train line (TGM))
- Limite de Carthage (boundary of Carthage)
- Zones socio-géographiques (socio-geographical zones)
- ⊕ Projet existant de la production alimentaire (existing food growing project)
- ⊕ Projet existant de l'élevage du bétail (existing livestock breeding project)

CLASSIFICATION DES ACTIVITÉS DE SYSTEME ALIMENTAIRE (classification of existing food system activities)

- ⊕ Production alimentaire (food production)
 - voir les espaces de production alimentaires ci-dessus (see food production activities above)
- Traitement des aliments (food processing)
 - Sur le site de production (on the production site)
 - ⊕ Entreprises de traitement (processing businesses)
 - ⊕ Boulangerie (bakery)
- Vente au détail de produits alimentaires (food retail)
 - Épicerie (grocery store)
 - Marché local (local market)
 - Supermarché (supermarket)
- Consommation alimentaire (food consumption)
 - Restauration rapide (locale) (local fast food)
 - Restauration rapide (fast food)
 - Restaurant gastronomique (gastronomic restaurant)
 - Hôtel (hotel)
- ◆ Recyclage des déchets alimentaires (food waste recycling)
 - ◆ Installations de compostage (composting facilities)

SCENARIO DEVELOPMENT

PARTICIPATORY INTEGRATIVE PLANNING APPROACHES



Transition Pathway



This project has received funding from the European Union's Horizon 2020 research and innovation programme under grant agreement No. 776665

EDIBLE CITY STRATEGY



3 food-focused urban visions carry our „big vision” for an Edible Cartage – an inclusive, vibrant and resilient city rich in history and rich in future.



4 urban development concepts are the starting points for rethinking local strategies that help our community to transition into an Edible City.



10 societal challenges have been identified in Carthage that need to be addressed most urgently. Food can be (part of) their solutions.



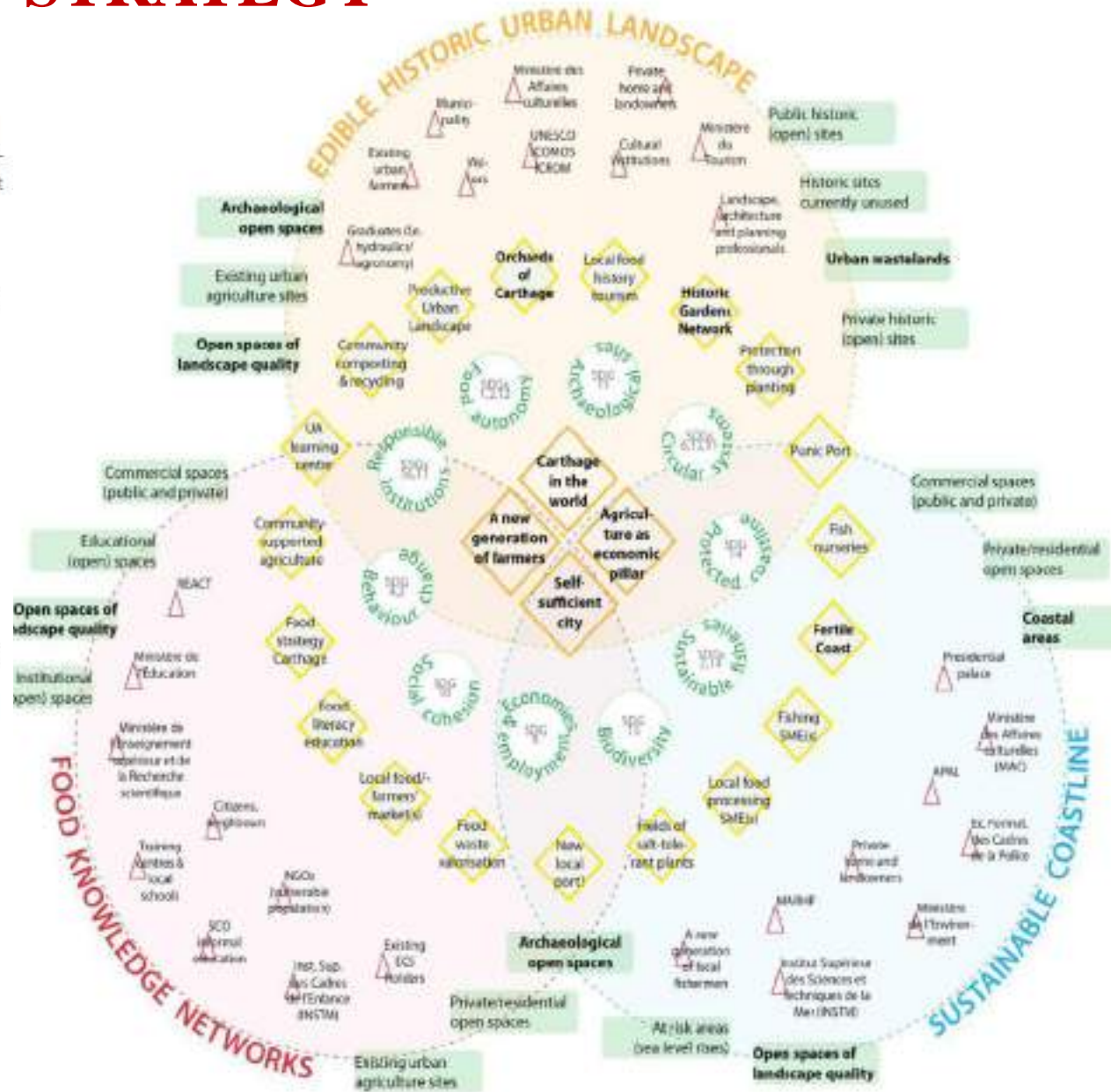
food-focused projects & actions can be small or large, temporary or permanent, publicly- or privately-led, social, environmental or economic.



an open space classification has been developed to better identify sites and pieces of land suitable for food growing and other activities.



many local stakeholders came forward already expressing their interest to collaborate in a more food-focused urban development.





EdiCitNet

Integrating Edible City Solutions
for social, resilient & sustainably productive Cities

TRANSFER DEVELOPMENT

PARTICIPATORY INTEGRATIVE PLANNING APPROACHES

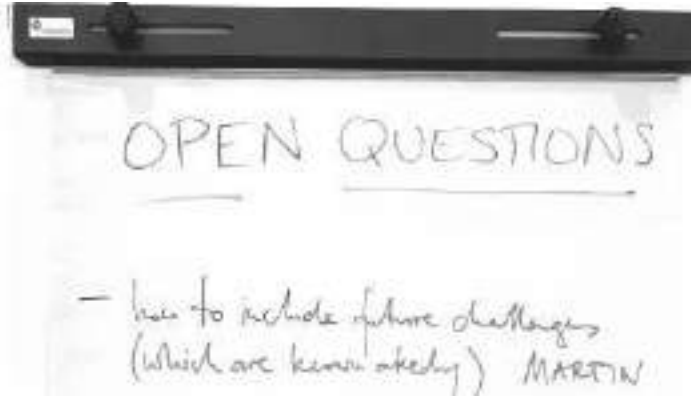


Transition Pathway



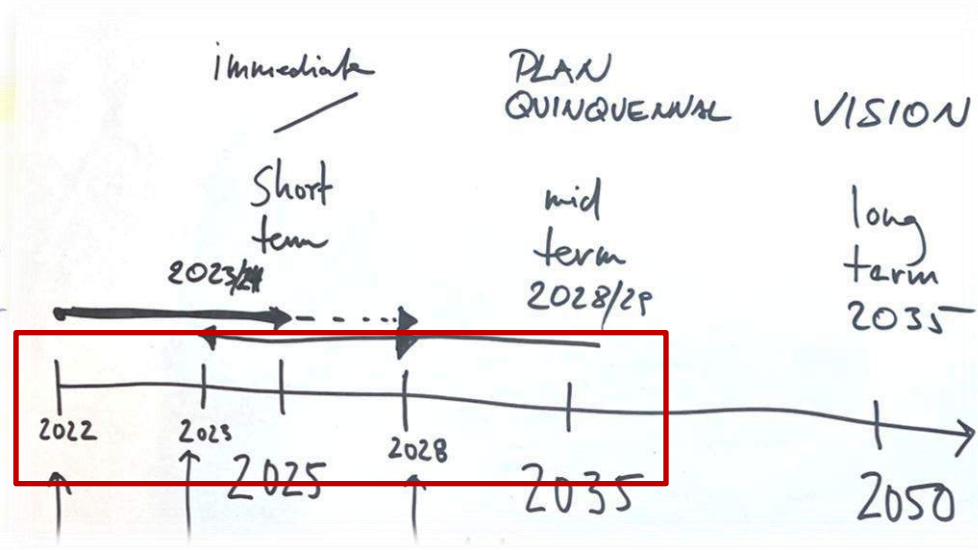
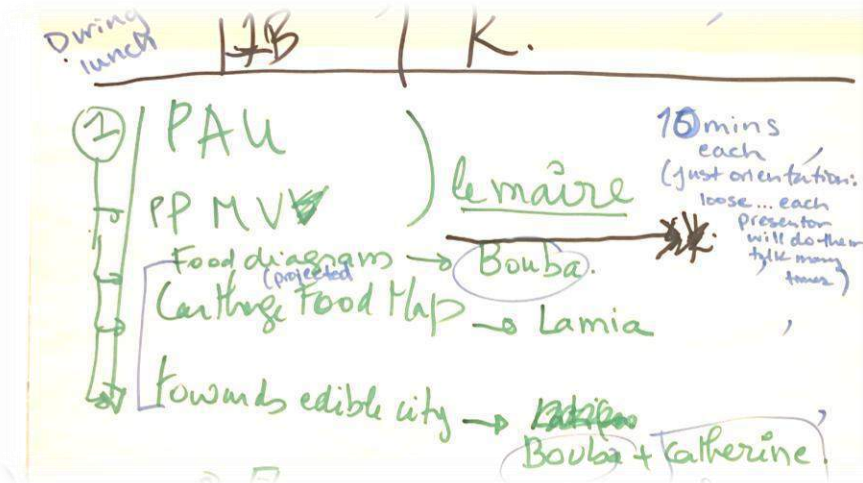
This project has received funding from the European Union's Horizon 2020 research and innovation programme under grant agreement No. 776665

WORKSHOP CARTHAGE

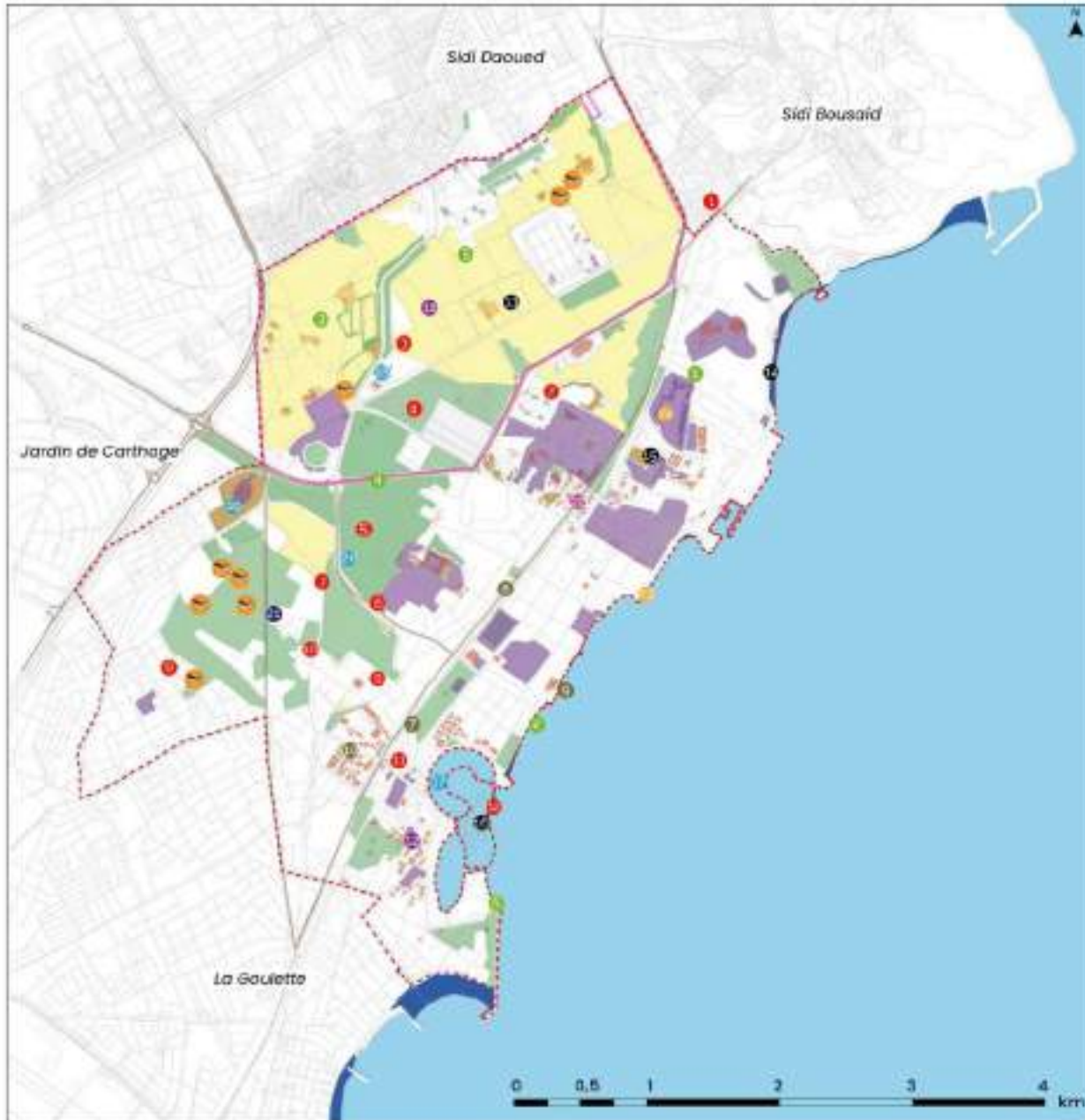


MASTER PLAN / PAU-PPMV

TIMES-SCALE / POLITICAL MILESTONE



MASTER PLAN



LEGENDE

ECS Existants à Carthage

- 1 Sidi Daoued
- 2 Sidi Bousaid
- 3 Jardin de Carthage
- 4 La Goulette
- 5 Sidi Daoued
- 6 Sidi Bousaid
- 7 Jardin de Carthage
- 8 La Goulette
- 9 Sidi Daoued
- 10 Sidi Bousaid
- 11 Jardin de Carthage
- 12 La Goulette
- 13 Sidi Daoued
- 14 Sidi Bousaid
- 15 Jardin de Carthage

— Réseau routier

— Réseau d'égouts

— Réseau d'eau

SITES POSSIBLES DES ECS PROJÉTÉS

- 1 Agriculture et logement
- 2 Résidentiel
- 3 Mixte
- 4 Résidentiel
- 5 Parc et espaces publics
- 6 Parc et espaces publics

ECS PROJÉTÉS À CARTHAGE

AGRICULTURE

- 1 1000 ha de terres agricoles à réhabiliter (zone d'agriculture urbaine)
- 2 1000 ha de terres agricoles
- 3 1000 ha de terres agricoles
- 4 1000 ha de terres agricoles
- 5 1000 ha de terres agricoles
- 6 1000 ha de terres agricoles
- 7 1000 ha de terres agricoles
- 8 1000 ha de terres agricoles
- 9 1000 ha de terres agricoles
- 10 1000 ha de terres agricoles
- 11 1000 ha de terres agricoles
- 12 1000 ha de terres agricoles
- 13 1000 ha de terres agricoles
- 14 1000 ha de terres agricoles
- 15 1000 ha de terres agricoles

HYGIENE

- 1 Station de traitement des eaux
- 2 Station de traitement des eaux
- 3 Station de traitement des eaux
- 4 Station de traitement des eaux

INDUSTRIE

- 1 Zone industrielle
- 2 Zone industrielle

INSTRUCTION

- 1 École
- 2 École
- 3 École
- 4 École

CULTURE

- 1 Parc
- 2 Parc
- 3 Parc
- 4 Parc

COMMERCE

- 1 Zone commerciale

GOVERNANCE

- 1 Zone de gestion

TOURISME

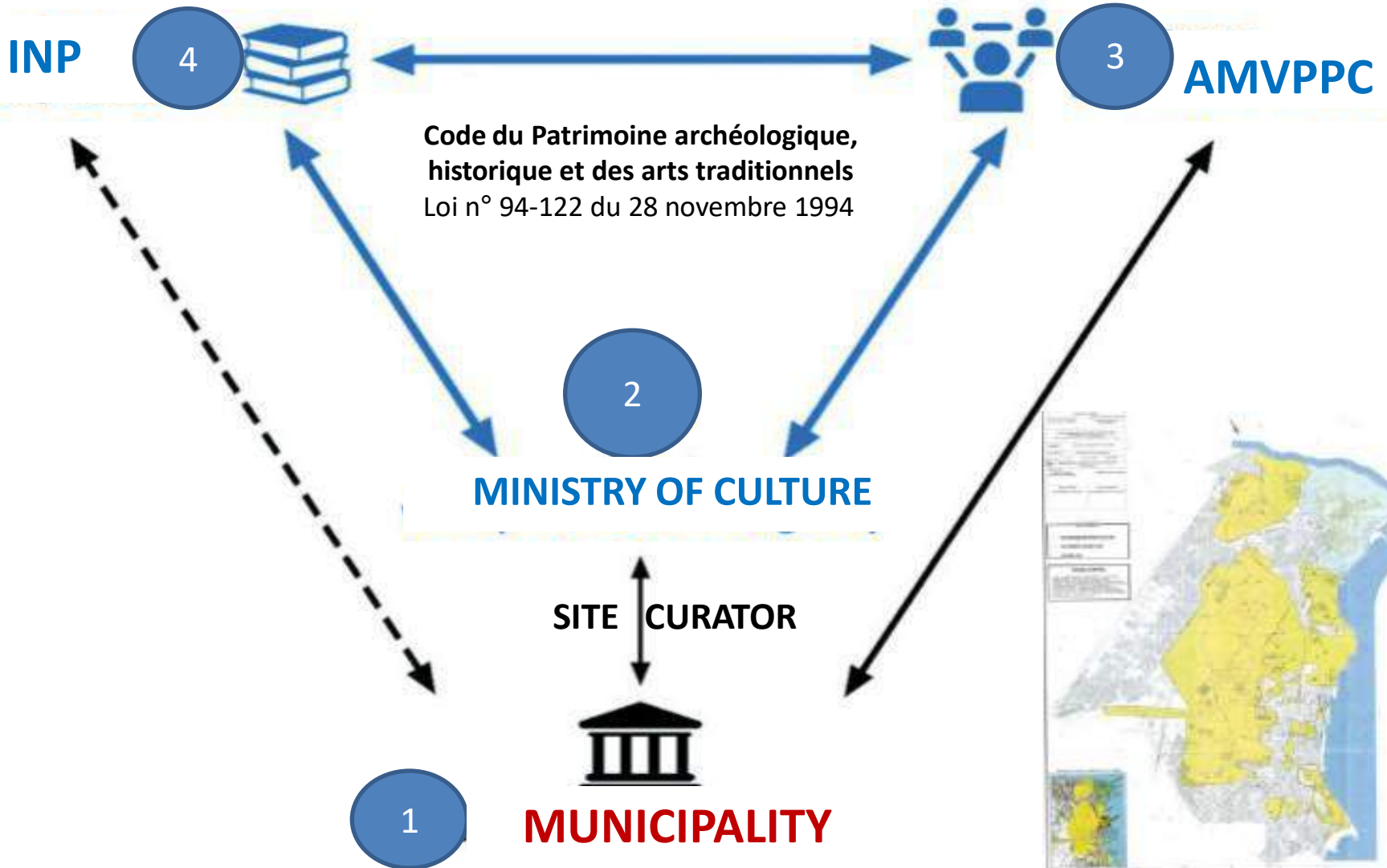
- 1 Zone touristique
- 2 Zone touristique

HOW TO INTEGRATE MASTER PLAN (ECS) WITH PAU & PPMV ?

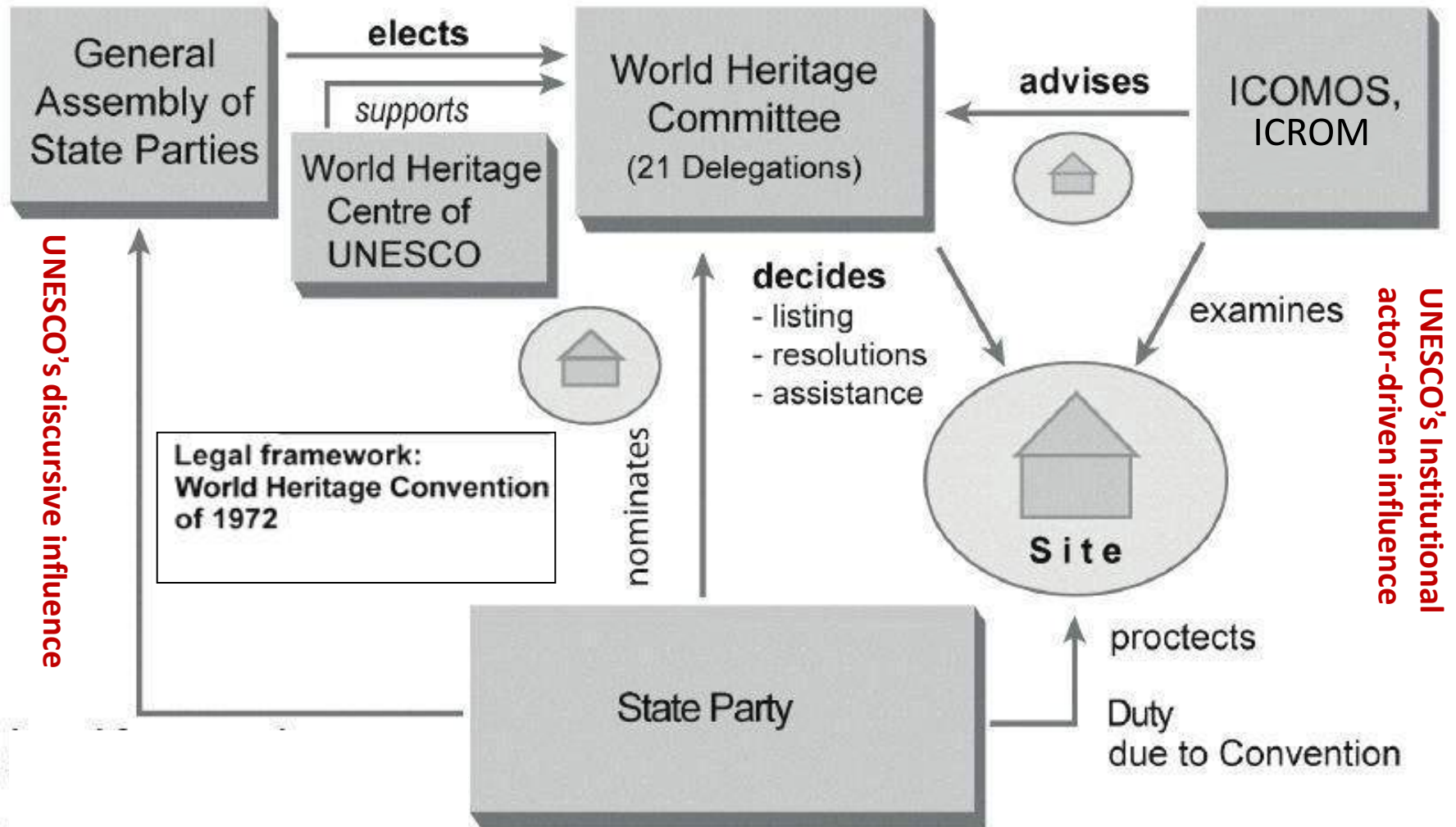


PAU: Plan d'Aménagement Urbain
PPMV: Plan de Protection et de
Mise en Valeur (Site Archéologique)

GOVERNANCE STRUCTURE IN THE TUNISIAN HERITAGE SYSTEM

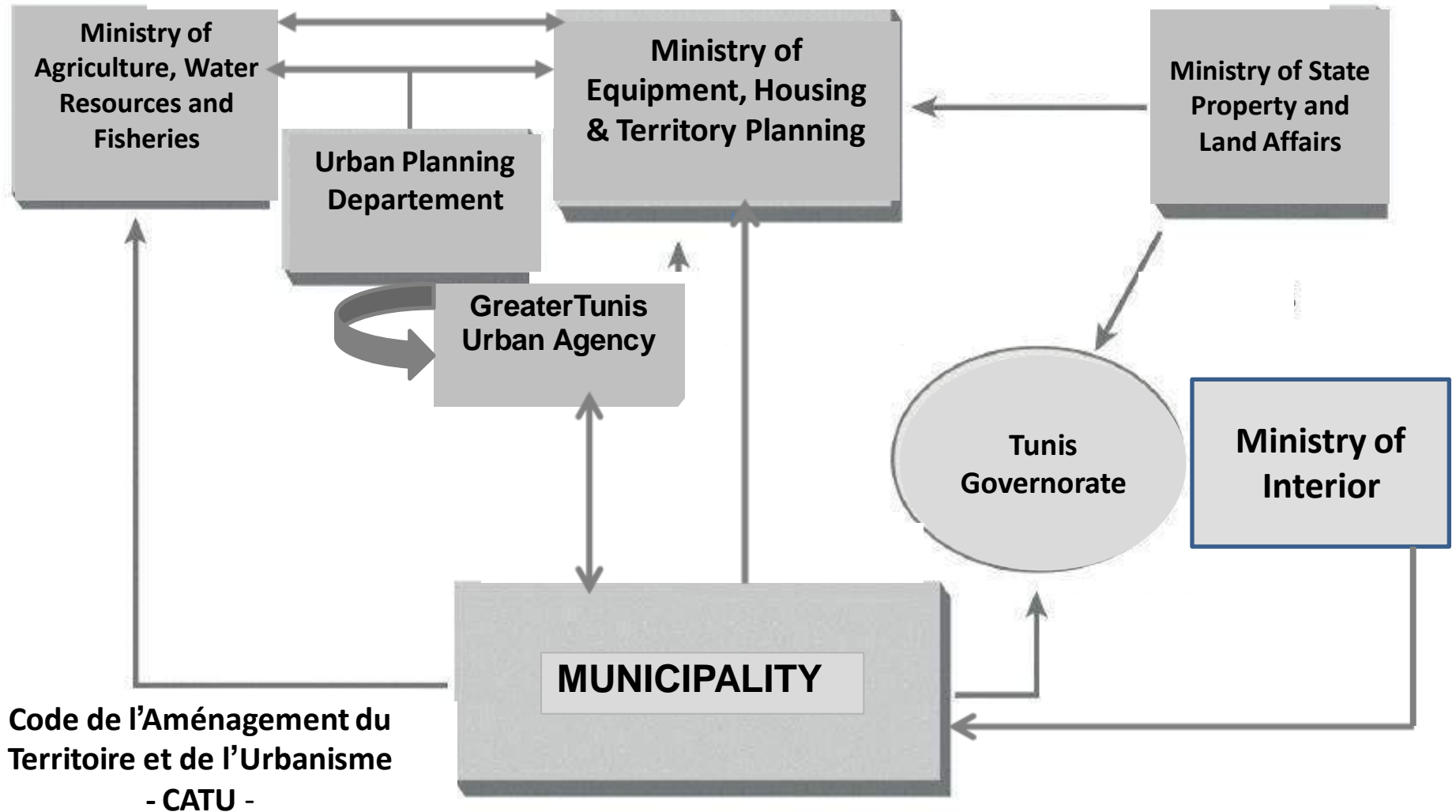


GOVERNANCE STRUCTURE IN THE WORLD HERITAGE SYSTEM



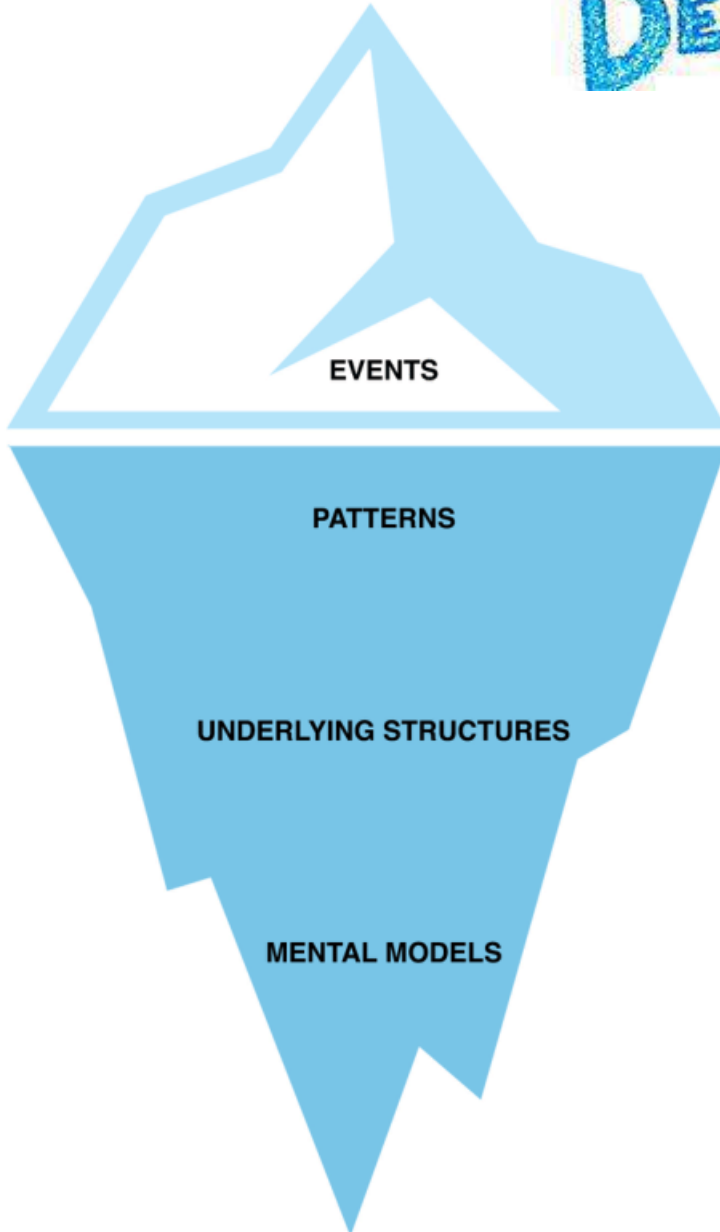
GOVERNANCE STRUCTURE IN TUNISIAN URBAN PLANNING SYSTEM

Management and Urban Planning Code- CATU –
Local Authorities Code





FLEXIBLE INCLUSIVE GOVERNANCE



REACT

Urban planners, still less engaged in food-related issues, the ultra-conservatives of heritage cling to the “yellow map” and social tensions escalate

ANTICIPATE

Taking actions based on narratives discourses and debate without significant results and sustainability

DESIGN

Developing a more coherent policies based on Thinking Systems analysis and Political economy approach .

TRANSFORM

Considering Values, Norms and Principles that underline the design of Flexible Inclusive Governance processes



THANKS

THANK YOU

THANK YOU

THANK YOU