

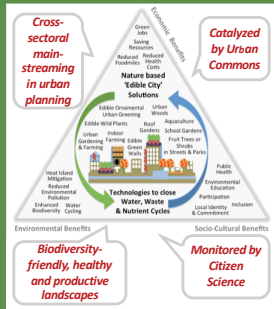
Edible Cities Network Integrating Edible City Solutions for social, resilient & sustainably productive cities



Social cohesion, environmental justice, human health & wellbeing

Our expertise to foster ECS

- **Fostering Multifunctionality** as a strategy for healthy, biodiversity-friendly and sustainable productive landscapes
- **Edible Cities Solutions** as nature-based answers to today's urban challenges.
- **Innovation concepts** for sustainable land management by using historical cultivation techniques to create common identities
- Planning instruments to strengthen **health-related ecosystem services** in the green residential environments



Our ECS concept amplifies the benefits provided by traditional NBS from **supply of ecosystem services** such as cooling, air and water cleaning, **habitat services or recreation effects** towards **provisioning services** that address food security, poverty alleviation, and **inequality in urban areas** (see Säumel et al 2019; Scharf et al. 2019).



Our Team
in the research group **Multifunctional Landscapes** comprises experts of geographical, ecological, agricultural, social sciences and planning.



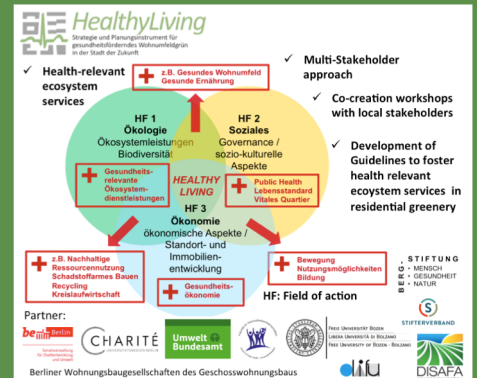
EdiCitNet Kickoff in Berlin (2018)

Suhana Reddy (suhana.reddy@hu-berlin.de);
Thomas Wachtel (thomas.wachtel@hu-berlin.de);
Ina Säumel (ina.saeumel@hu-berlin.de).

Our best practice examples



In the KURAS Project we developed concepts for the water sensitive and biodiversity-friendly cities with multiple stakeholders.



In the **HealthyLiving** and in the **Rural Futures** project we developed concepts for the healthy, inclusive and biodiversity-friendly urban and rural landscapes with multiple stakeholders.



Our Role in the EdiCitNet Project

We initiated and developed the EdiCitNet project since 2016 and are the coordinators of the project. We are mainly involved in the WP1 (Urban Governance and Network Infrastructure), WP3 (Co-creation of Living Labs & Replication and Up-scaling in FRC); WP4 (Transition Pathways – Planning for ECS in FC); WP5 (Documentation & Monitoring; esp. Citizen Science); WP6 (Consulting, Business Development & Market Up-take); WP7 (Education, Knowledge Transfer & Dissemination, Lead); WP8 (Coordination and Management, Lead).

References: Reijnders et al. 2019 Sustainability 11, 1815; Säumel et al. 2019 Sustainability 11(4), 972; Scharf et al. 2019 Sustainability 11, 966; Säumel et al. 2017 in Nachhaltigkeitswissenschaften & die Suche nach neuen Wissensordnungen (Metropolis Verlag); Schlecht & Säumel 2015 Environmental Pollution 204-208-920; von Hoffen & Säumel 2014 Ecotoxicology & Environmental Safety, 101: 210-220; Säumel et al. 2012 Environmental Pollution, 165: 124-132.



See Säumel et al. 2012; von Hoffen & Säumel 2014; Schlecht & Säumel 2015

Contact: Research Group Multifunctional Landscapes, IRI THESys, Humboldt Universität zu Berlin, Unter den Linden 6, 10099 Berlin
www.iri-thesys.org; Research Group Leader Ina Säumel, Phone: +49 30 2093-66379; Fax: +49 30 2093-66335

This project has received funding from the European Union's Horizon 2020 research programme under grant agreement no. 776665.

